

November 2014



Director's Message

Hello and happy holidays!

Many of us have just returned from the American Geophysical Union meetings, the largest scientific conference in the Earth sciences and the second-largest in planetary science (total attendance was 25,000 this year).

We held a reception for SESE on Monday night and attendance and spirits were high, and the science presented by SESE and alums was excellent – a colleague of mine from Cambridge University commented that as he listed the most interesting talks and made his meeting schedule, he was amazed by how many came from SESE.

Looking back over the highlights of 2014 is popular this time of year, but we've covered so many with previous newsletters and in our press releases that I want to highlight just one right now: We are so

pleased to welcome former astronaut and medical doctor [Scott Parazynski](#) to the faculty of both SESE and the Ira A. Fulton Schools of Engineering. Scott is ASU's first designated University Explorer, and we are all looking forward to working with him on issues of space flight and humans in extreme environments. Please join me in welcoming Scott.

Looking forward, in January we will have our first SESE pitching competition! Three cohorts from SESE – the incoming undergraduates taking Prof. Arjun Heimsath's "Exploring SESE" course, the senior graduate students, and the postdoctoral scholars – will compete for \$1,000 each in funding for their favorite projects. Each participant will have three minutes to pitch their idea to the audience and to a panel of judges. Come listen, and cast your vote for the audience favorites! Wednesday, January 21 at 5:00 p.m. in the Marston Exploration Theater.

Some additional highlights ahead for 2015:

Three SESE faculty will submit proposals to lead missions in NASA's \$450 million Discovery class, and missions, and at least eight faculty will join other Discovery proposals as co-investigators. This is the highest level of participation in the Discovery program of any university.

We are working on hiring four new faculty in the field of exoplanets, one new faculty member with ties to surface processes, climate, and life sciences through the Southwest Borderlands Initiative, and a sixth new faculty member in planetary sciences.

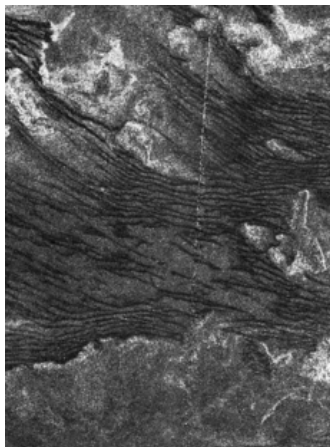
In January we will kick off the SESE New Discoveries Lecture Series, consisting of four public lectures each semester by SESE faculty, designed to better bring our science to the Phoenix community.

Thank you all so much for being part of the SESE community. And stay in touch! We'd love to highlight your news in this newsletter.

All my best for happy holidays and a wonderful 2015 --

Lindy

RESEARCH NEWS



Saturn's largest moon, Titan, is one of the few solar system bodies – and the only planetary moon – known to have



Arizona State University professor Lawrence Krauss has been named the 2015 Humanist of the Year by the American Humanists Association. The Humanist of the Year award was established in 1953 to recognize a person of national or



A recent article published in Science features the Martian meteorite NWA 7034 (aka Black Beauty), and details its discovery and

fields of wind-blown dunes on its surface. (The others are Venus, Earth and Mars.) [Read more](#)

international reputation who, through the application of humanist values, has made a significant contribution to the improvement of the human condition. [Read more](#)

distribution among collections. ASU's Center for Meteorite Studies holds a 20-gram cut of Black Beauty. See the CT image movie of the Center's slice of this unique and rare meteorite [here](#).

ALUMNI SPOTLIGHT



Dan Vice

ASU Alumnus - 1974 MSc in Geological Sciences

Growing up, Dan Vice recalls his days on the ranch he and his family lived on in central Oregon. Rocks were "there to see," he says. "In other words, the rocks were not covered up by trees since the area is a desert." He fondly recalls one of his cousins commenting that as a kid, Dan "was always going around picking up rocks." Dan was destined to become a geologist, and though his family was disappointed that he didn't take over the family ranch, they supported his professional choices.

"I came to ASU because Dr. Pewe [a professor of geology at ASU] talked me into it and because I wanted to see new geology and new areas," explains Dan. It was a combination of loving geology and being advised that the Master's level was the working level for geology that propelled him toward the geological sciences master's degree program.

[Read more](#)

EVENTS



SESE New Discoveries Lecture Series

January 29 at 7:30 p.m.

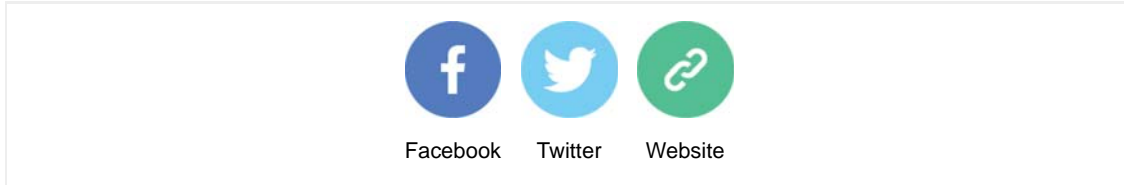
On January 29, join Professor Lindy Elkins-Tanton, director of ASU's School of Earth and Space Exploration, for the inaugural lecture in the SESE New Discoveries series. Dr. Elkins-Tanton will present a lecture on "Building Earth-like planets: From gas and dust to ocean worlds."

The SESE New Discoveries Lecture Series is designed to bring the exciting scientific work of SESE to the general public in a series of informative and up-to-date evening lectures. Each will be given by a member of the SESE faculty.

Lectures will be given in the Marston Exploration Theater. They are free and open to the public.

For more details and to RSVP, please visit:
<http://sese.asu.edu/new-discoveries>

To view our events calendar, click [here](#).



Copyright © 2014 ASU School of Earth and Space Exploration, All rights reserved.

Our mailing address is:

Arizona State University * ISTB4, Room 795 * 781 E Terrace Mall * Tempe, AZ * 85287-6004

[unsubscribe from this list](#) [update subscription preferences](#)

This email was sent to << Test Email Address >>

[why did I get this?](#) [unsubscribe from this list](#) [update subscription preferences](#)

The School of Earth and Space Exploration at Arizona State University · Interdisciplinary Science and Technology Building IV · Room 795 · Tempe, AZ 85287-6004 · USA

The MailChimp logo, featuring the word 'MailChimp' in a white, cursive script font, centered within a grey rounded rectangular background.