

January 2015



Director's Message

Dear SESE Family,

A few weeks ago we held our first Great SESE Pitching Competition! Thirteen of our students, from freshmen to postdoctoral fellows, each gave a three-minute pitch for a project they were eager to start. We had ideas from photographing fragile northern Arizona caves to preserve them before they are frequently traversed by people, to measuring climate-changing gases in volcanic lavas, to preparing classroom materials for mountain communities in Columbia. The first-year students dazzled us all with their excellence, giving the graduate students and postdocs a run for their money! You can learn more about the winners [here](#).

To launch programs like the SESE Postdoctoral Development program, we need funds beyond the salary and operating expenses supported by the state. Would each of you – faculty, staff, students, and friends – please add a reminder to your calendar that **Thursday, March 19 is Sun Devil Giving Day**? This is one of our special opportunities to raise these funds.

Sun Devil Giving Day is an annual university-wide effort to build a better, stronger ASU. Over a 24 hour challenge period, students, alumni, faculty, staff, parents and friends experience some good old-fashioned rivalry as we give back to their favorite college, school, program or unit and compete for matching challenges.

What happens on **Sun Devil Giving Day**?

- You participate in matching challenges that make your gift go even further.
- You support your favorite school, program, scholarship, or initiative. Go SESE!

- You help to change lives that change the world.

In the College of Liberal Arts & Sciences, gifts will be matched dollar-for-dollar, doubling the impact of your gift (up to \$1,000 per gift to non-endowed gift accounts). If you're a new donor – you have never given to the university – your gift will be matched *twice* (for example, your new \$100 gift turns into \$300). The total amount available for the matching program is \$50,000. Once this total amount is reached, the CLAS matching program will conclude. So make your donation early! The clock starts at 12:00 a.m. AZ time on March 19th.

Please consider a gift to SESE accounts of your choosing. If everyone were to donate – even a small gift – the funding outcome would provide a wonderful legacy to SESE students for the coming year. Give back and double your impact.

This last Friday was the day that students admitted to our graduate program were invited to come back and visit the campus. What fun to meet them and have a chance to talk about the excitement of SESE and what they could learn and achieve if they came here. Hoping we convinced them all! And a special thanks to all the faculty that make this visit a success.

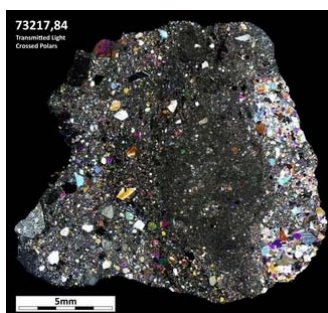
Thanks and Go Devils!!

All the best,
Lindy

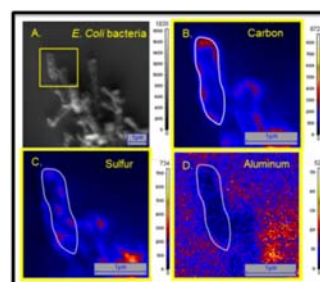
RESEARCH NEWS



NASA has selected 14 small satellites from 12 states to fly as auxiliary payloads aboard rockets planned to launch in 2016, 2017 and 2018. ASU was one of the institutions selected for sponsoring a satellite.



A team led by ASU researchers has now refined the timeline of meteorite impacts on the moon through a pioneering application of laser microprobe



Two secondary ion mass spectrometry laboratories in ASU's Bateman Physical Science Complex were recognized as hotbeds of scientific research, and received a \$1M

[Read more](#)technology to Apollo 17 samples. [Read more](#)grant from National Science Foundation. [Read more](#)

ACHIEVEMENTS



Enrique Vivoni Fulbright Recipient

As one of this year's Fulbright Scholars, Arizona State University hydrology professor Enrique Vivoni will have an opportunity to work with some of Mexico's leading experts in his field to advance his collaborative studies of the shared water resources between the U.S. and Mexico.

[Read more](#)

NEW! FIELD TRIP OPPORTUNITY

Join us
May 1-3
For a field trip to
Petrified Forest National Park



Contact: SonyaL@asu.edu
SESE.ASU.EDU/Explore-More

Explore More Field Trips

Come discover the Petrified Forest! Join geologist [Steve Semken](#) May 1-3 on an excursion to the magnificent badlands of Petrified Forest National Park, a signature high-desert landscape located in northeastern Arizona. Discover the deep past and explore the current environment. We will travel along Route 66 and stay at the historic La Posada Hotel in Winslow, Ariz. [Sign up today](#)

The School of Earth and Space Exploration's **Explore More** field trips offer exciting, outdoor field adventures with an experienced faculty member. Our guided field trips will expose participants to the outdoors and create an awareness, excitement and appreciation for local geology, nature and ecology. Trips occur throughout the state at places of interest and include guided, interactive hikes and informal discussions.

SOMETHING SPECIAL TO CELEBRATE



Marston Exploration Theater

3-D astronomy shows are held on Wednesday evenings @ 7:30 p.m. and each Saturday afternoon @ 1:00 p.m. and 3:30 p.m.

<http://sese.asu.edu/marston>

Happy Birthday, Susie!

Susie Marston is a very special friend of SESE. Her transformational gift supported the construction of the Marston Exploration Theater in ISTB 4. On February 13, we celebrated Susie's birthday – SESE style. She attended a school show for a group of sixth grade students from Sunset Canyon Elementary. At the end of the 50-minute program, the Marston Exploration Theater planetarium technology was used to transport the group to her birth time and place. From a view of the solar system, the planets were spun backward to Susie's birth morning, allowing for a view of the starry sky as it appeared that morning. At a closer Earth view, they moved to Sacramento, Calif., and landed facing east toward a rising sun. While the sun rose, the following was read to Susie:

*Because of you, the expanding universe seems a little less intimidating and a little more inspirational.
Because of you, distant worlds seem more knowable.
And because of you, the stars in the night sky seem to shine a bit brighter for all of us.*

This was followed by the students singing happy birthday. Susie then went upstairs for a surprise celebration with friends.

EVENTS



SESE New Discoveries Lecture Series

On February 26, join Professor Philip Christensen, Regents' Professor of Geological Sciences in ASU's School of Earth and Space Exploration, for a lecture in the SESE New Discoveries series. Dr. Christensen will present a lecture titled "Snatching Samples From Micro-Worlds."

The SESE New Discoveries Lecture Series is designed to bring the exciting scientific work of SESE to the general public in a series of informative and up-to-date evening lectures. Each will be given by a member of the SESE faculty. The next lecture will be held on Friday, March 20 and will be given by Professor Ed Garnero.

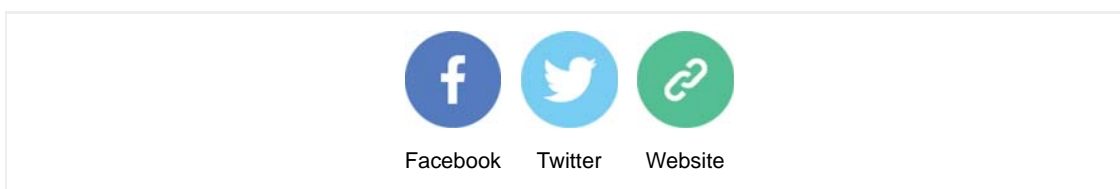
For more details, please visit: <http://sese.asu.edu/new-discoveries>



ASU Night of the Open Door invites public to explore more

Arizona State University's largest and most successful open-house event of the year, [Night of the Open Door](#), offers even more to explore this year. More than 100 activities will be hosted by the four ASU Night of the Open door events, from wielding a medieval sword to state-of-the-art video technology. Night of the Open Door at the Tempe campus will be held February 28 from 4-9 p.m. The event enables visitors to explore the Tempe, Polytechnic, Downtown Phoenix and West campuses, with multicultural performances and hands-on activities celebrating the sciences, culture, engineering, humanities, math, language and the arts at their fingertips.

To view our events calendar, click [here](#).



Copyright © 2015 ASU School of Earth and Space Exploration, All rights reserved.

Our mailing address is:

Arizona State University * ISTB4, Room 795 * 781 E Terrace Mall * Tempe, AZ * 85287-6004

[unsubscribe from this list](#) [update subscription preferences](#)

This email was sent to << Test Email Address >>

[why did I get this?](#) [unsubscribe from this list](#) [update subscription preferences](#)

The School of Earth and Space Exploration at Arizona State University · Interdisciplinary Science and Technology Building IV · Room 795 · Tempe, AZ 85287-6004 · USA

The MailChimp logo, featuring the word 'MailChimp' in a white, cursive font on a grey rectangular background.